

Xplore CFL 65

micro cast film line

Table top micro cast film line for R&D applications



xplore

The platform for
polymer and rubber R&D

Fast screening of new film formulations: a 65 mm broad cast film line

Xplore earlier developed a 35 mm micro cast film line for small samples (5 ml) for preliminary screening. However, our customers always want better and more R&D possibilities, so we can now also offer a high tech 65 mm wide cast film line with dedicated temperature control. This will guarantee an even better controlled process and larger test samples for testing of optical, mechanical and/or barrier properties.

In less than 20 min you can produce a wide cast film with our 65 mm heated film die, with a thickness from 5 μm up to strip thickness with the batch size of one of our compounders. Or you can make many meters of film or strip in the continuous mode with larger sample quantities.

Our continuous feeding kit, which consists of a mountable, water-cooled top hopper and two continuous feeding screws and/or forced feeding screws, enables easy auto feeding in continuous extrusion mode.

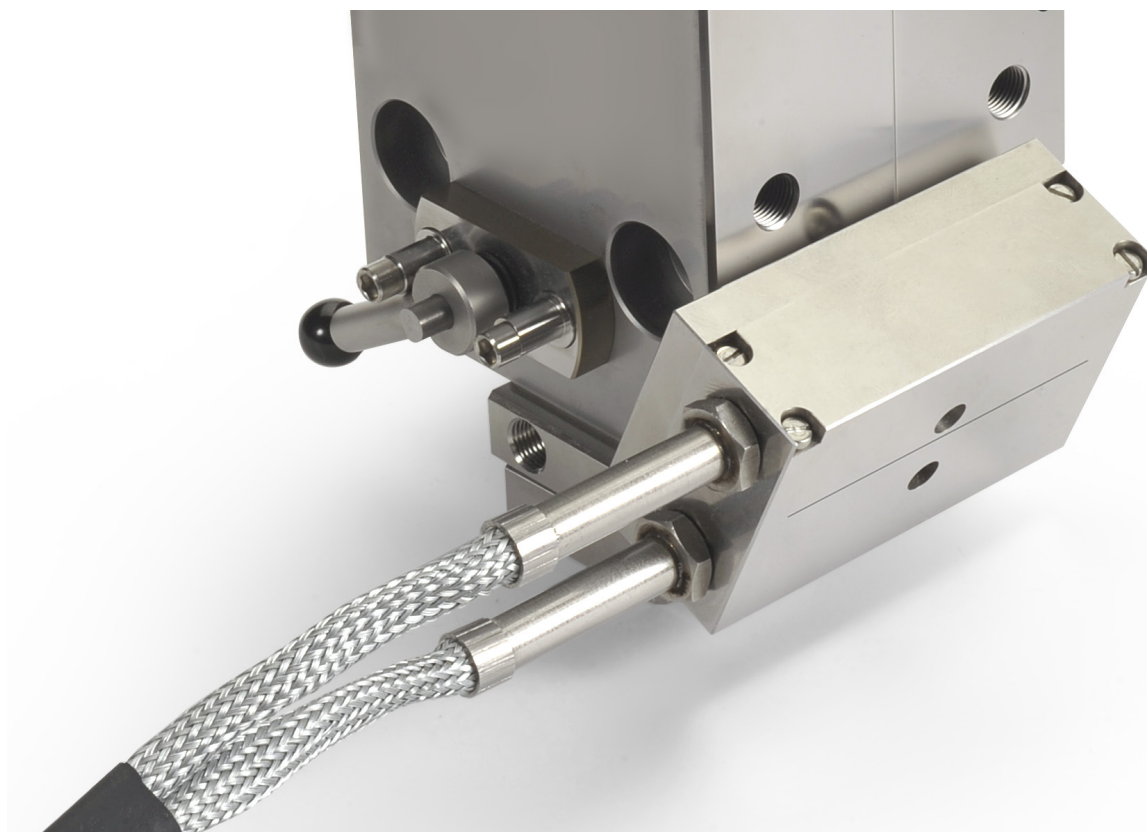
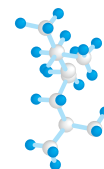
The film casting speed can be adjusted between 100 and 5000 mm/min with increments of 1 mm/min on the first calender cast roll.*) Film necking is minimized with an air knife just after the die.

The second calender winder roll is torque controlled, to ensure even film uptake, which can be adjusted with increments of 1 Nmm.

In this way, you can further test and better optimize new film formulations at minimal costs and with negligible waste by producing more than 20 film samples of different compositions per day.



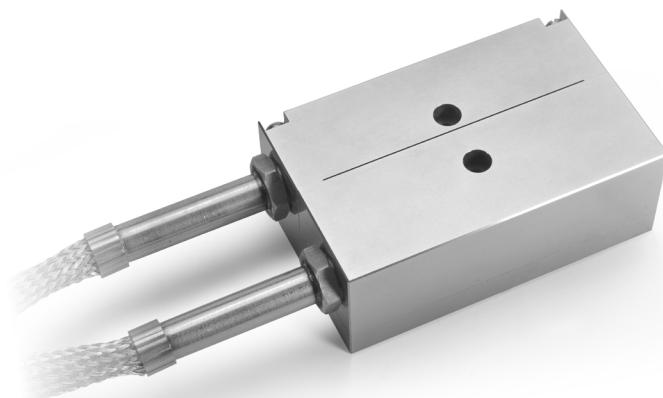
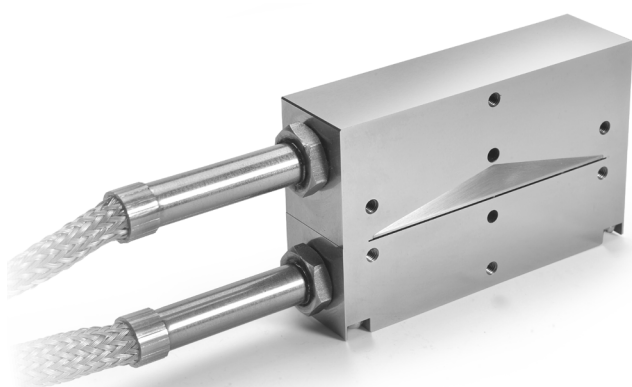
*) Xplore Instruments BV, proprietary technology



Heated die with coat hanger

Our Xplore CFL 65 mm offers you the most efficient solution: reliable, reproducible, fast results with less material and waste, less equipment and infrastructural costs. The Xplore CFL 65 mm your trump to beat the competition. The Xplore CFL 65 is not a want to have, but a must-have for every R&D and quality control lab working with polymeric films and/or sheets. Xplore is the front runner in miniaturization of polymer processing tools and enables you to conduct polymer formulation development in a timely and cost-effective way.





Technical Specifications:

- Cast film line dimensions: L 43 x W 25 x H 16 cm
- Weight: ca. 10 kg
- Air knife: W 74 mm
- 2 Calenders with rolls: W 98 x Ø 75 mm,
 - 1 calender is speed controlled between 100 - 5000 mm/min
 - 1 calender is torque controlled, 230 adjustable increments of 1 Nmm
- Temperature controlled cast film die: width 65 mm, slit height between 0.2, 0.4 or 0.6 mm

Controls

- Control box with integrated operating display to control drum winder; speed and torque
- Supply voltage: 115 or 230 Volts

Optionally

- Custom defined height of the slit die
- Custom defined surface finish of the slit die
- Continuous feeding kit for use with a Xplore compounder which consists of:
 - Water-cooled top hopper
 - Continuous feeding screws and/or forced feeding screws (enhanced feeding zone)
- Additional calender(s) for processing slippery film
- Elastic surface finish of calender rolls

Xplore Instruments BV

Arendstraat 5
6135 KT, Sittard
The Netherlands

Tel: +31 46 208 97 70
Fax: +31 46 208 97 71

info@xplore-together.com
www.xplore-together.com

Trade Register: 60040114

