

Exacta•Coat

PROGRAMMABLE COATER



ULTRASONIC SPRAYING SYSTEM

The ExactaCoat is a fully-enclosed programmable 3-axis robot that is ideal for any spray coating application. This system employs robust ball-screw slides driven by brushless DC servo motors. Sono-Tek ultrasonic nozzles are easily integrated. Spray pattern widths can be easily shaped depending on which nozzle is used.

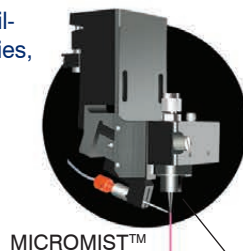
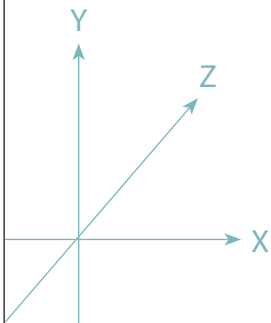
The ExactaCoat includes many integrated features:

- Compact benchtop design that favors portability
- 400 mm x 400 mm x 100 mm (15.75" x 15.75" x 3.94") range of motion
- Windows®-based programming software with image import (PC included)
- Remote trackball teach pendant
- Coordinated motion in all three axes simultaneously

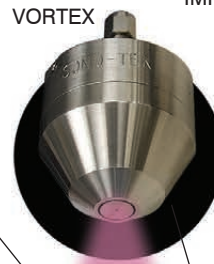
Sono-Tek ultrasonic nozzles feature:

- Up to 80% reduction in material consumption
- Reduced wasteful overspray and atmospheric contamination
- Non-clogging design results in minimal servicing and downtime
- Precise, repeatable spray patterns are easily shaped
- Highly controllable spray produces reliable, consistent results
- Corrosion-resistant titanium and stainless steel construction
- No moving parts to wear out

Ideal for R&D or low-volume production, the ExactaCoat is easily configured with Sono-Tek ultrasonic nozzles to customize spray patterns for your specific application. Patterns are easily shaped, ranging from 0.08" - 6" wide (2 - 153 mm). Several liquid delivery options are available with a wide range of flow rate capabilities, depending upon the system configuration.

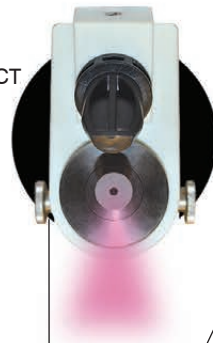


MICROMIST™



VORTEX

IMPACT



ACCUMIST™



Optional Equipment:

Heat Plate, Vacuum Plate, or Combined Heat/Vacuum Plate

Ultrasonic Dispersion Pump
- for keeping suspensions evenly dispersed during coating process

MicroFlow Recirculation Pump - for precise dispense of suspensions at very low flow rates

Camera - Passive Vision

Laser Pointer

Low oxygen atmosphere with monitoring



SONO•TEK Corporation

ExactaCoat Programmable Coating System Specifications

Work Area: 400 x 400 x 100 mm*
(15.75 x 15.75 x 3.94 in)

*NOTE: Coating area may be reduced depending
on nozzle configuration, options and accessories

Repeatability: 0.025 mm (0.001 in)

Resolution: 0.015 mm (0.0006 in)

Motor: Brushless DC servo

Drive Mechanism: Ball screw drive

Work Payload: 11.4 kg (25 lbs.)

Inputs/Outputs: 52

Software Control: Windows®-based
(PC included)

Power: 120V, 220V, +/- 10%, 50-60Hz

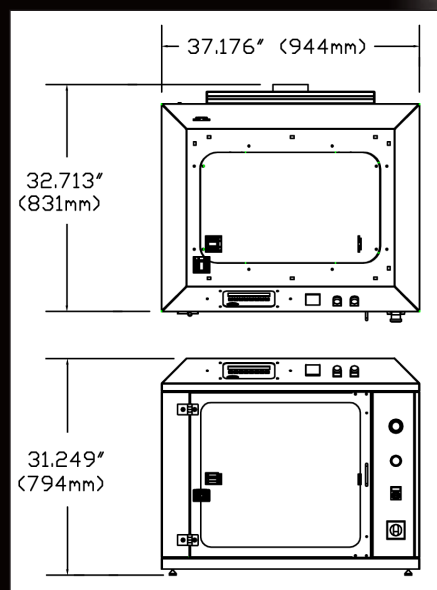
Air: 80 PSI dry unlubricated air

Certification: CE certified

Options

Heat plate temp	Up to 150°C
Vacuum plate	4 zones, user controlled
Camera	Adjustable (Passive Vision) viewing area
Laser Pointer	
Inert atmosphere with monitoring	

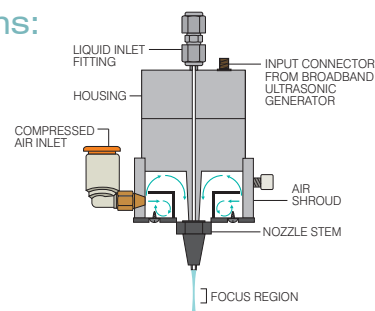
Dimensions: 37.2" W x 31.2" H x 32.7" D
944 mm W x 831 mm H x 794 mm D



Sono-Tek ultrasonic nozzles can create a variety of precise spray patterns:

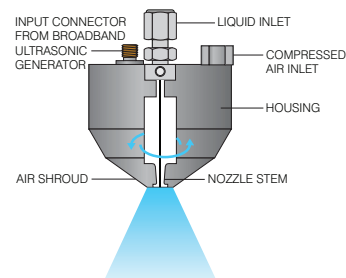
The AccuMist™ nozzle
creates a narrow,
slightly bow-shaped
spray pattern.

Pattern width
adjustable from
0.070 - 0.250"
(1.778 - 6.35 mm).



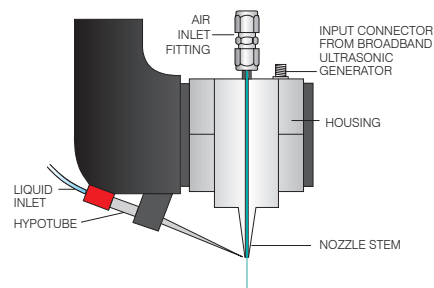
The Vortex
nozzle produces
a wide, conical
spray pattern.

Pattern width
adjustable from 2 - 4"
(50 - 102 mm)
in diameter.



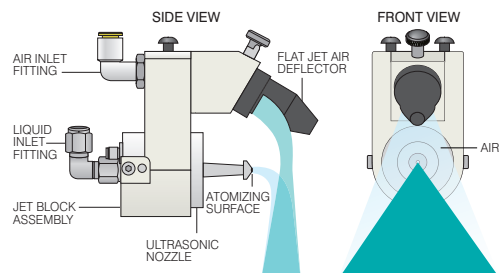
The MicroMist™
nozzle creates
a very narrow,
cylindrical spray
pattern.

Pattern width adjustable
from 0.010 - 0.030"
(0.26 - 0.77 mm).



The Impact
nozzle creates a
wide, fan-shaped
spray pattern.

Pattern width
adjustable from 2 - 6"
(50 - 150 mm).



All four nozzles shown create precise, repeatable, controllable, low-volume atomized spray patterns and can be easily integrated with the ExactaCoat™ Programmable Coating System.

Most commonly used with a Sono-Tek syringe pump for precision, low-flow applications, the ExactaCoat™ is an extremely flexible tool ideal for R&D or low volume production.

Sono-Tek Laboratory Services

Sono-Tek's in-house laboratory services offer the expertise of our engineering and technical staff in resolving process issues and tailoring our technology to meet the needs of our customers.



SONO•TEK Corporation
leadership through innovation

Corporate Headquarters:
2012 Rte. 9W, Milton, NY 12547
Phone: (845) 795-2020
Fax: (845) 795-2720

E-mail: info@sono-tek.com
Web: www.sono-tek.com
Printed in USA
©2008 Sono-Tek Corporation. All rights reserved
XYEXACT05R8

ISO CERTIFIED